

DO15 RC Indoor Phase VI Test Daily Notes

Date: July 31, 2019

Time: 9:40 am

Cycle count: 5803

Overlay Bottom Temp: T1 North: 28.56°F T1 South: 30.49°F

Ambient Temp: 81.09°F

North Section Observation

- Completed cracked, no further change.
- Bottom up crack at inner vertical edge as seen in Fig 1. Bottom up crack at outer vertical edge as seen in Fig 2.
- Surface crack connected to the bottom-up crack of the outer edge as seen in Fig 3, and the inner vertical edge shown in Fig 4.

South Section Observation

- No change from last observation.
- Bottom up crack at inner vertical edge shown in Fig5. Bottom up crack at outer vertical edge measured approximately 3.5 inch as shown in Fig 6.
- Surface crack reached the inner vertical edge as shown in Fig 7, approximately 3 inches from the outer vertical edge, no change as seen in Fig 8.

Issues

- None



Fig 1 Bottom-up crack at north section inner vertical edge reached top surface



Fig 2 Bottom-up crack at north section outer edge reached top surface

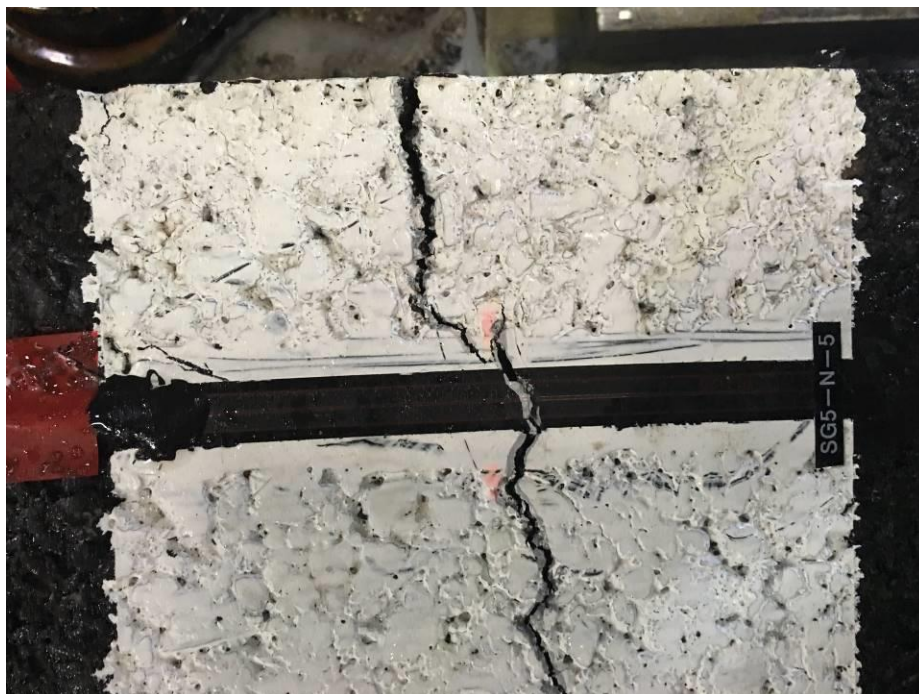


Fig 3 Surface crack on North Section reached outer edge



Fig 4 North section surface crack reached inner vertical edge



Fig 5 Bottom-up crack at inner vertical edge of south section reached top surface

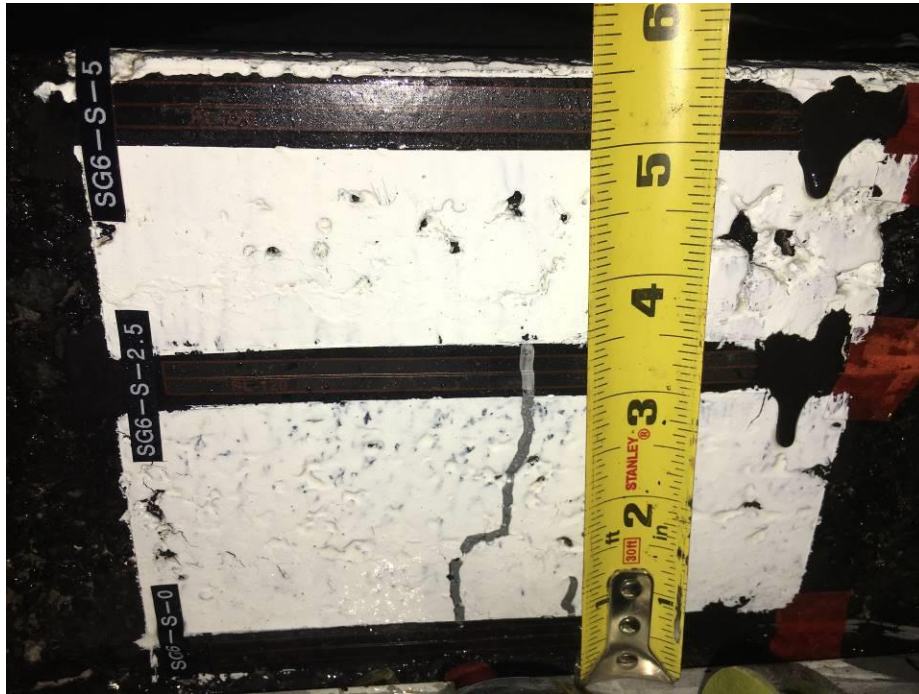


Fig 6 Bottom-up crack at SG6-S-0, SG6-S-2.5 approximately 3.5 inch long



Fig 7 South section surface crack reached the inner vertical edge

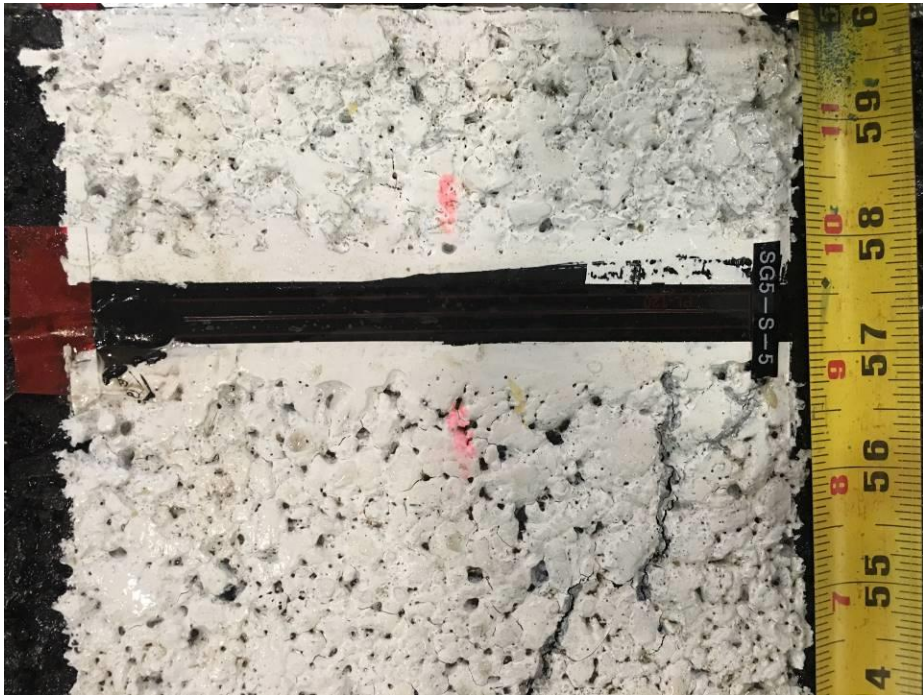


Fig 8 South section surface crack 3 inches from the outer vertical edge