

DO15 RC Indoor Phase VI Test Daily Notes

Date: June 26, 2019

Time: 8:45 am

Cycle count: 1949

Overlay Bottom Temp: T1 North: 26.35°F T1 South: 28.19°F

Ambient Temp: 76.29°F

North Section Observation

- 1 crack through SG1-N-0 and SG1-N-2.5 approximately 4.5 inches, no change (Fig 1).
- 1 crack through SG6-N-0, SG6-N-2.5 and SG6-N-5 all the way to the top surface (Fig 2).
- Surface crack connected to the bottom-up crack of the outer edge (Fig 3), 1.5 inch from the inner vertical edge, no change (Fig 4).

South Section Observation

- 1 crack through SG1-S-0, approximately 4.5 inches (Fig 5).
- 1 crack through SG6-S-0, approximately 3 inches, no change (Fig 6).
- Surface crack is 1.0 inch from the inner vertical edge (Fig 7), approximately 3 inches from the outer vertical edge (Fig 8)

Issues

- No



Fig 1 Bottom-up crack at SG1-N-0 and SG1-N-2.5 4.5 inch long



Fig 2 Bottom-up crack north outer edge reached top surface



Fig 3 Surface crack on North Section reached outer edge

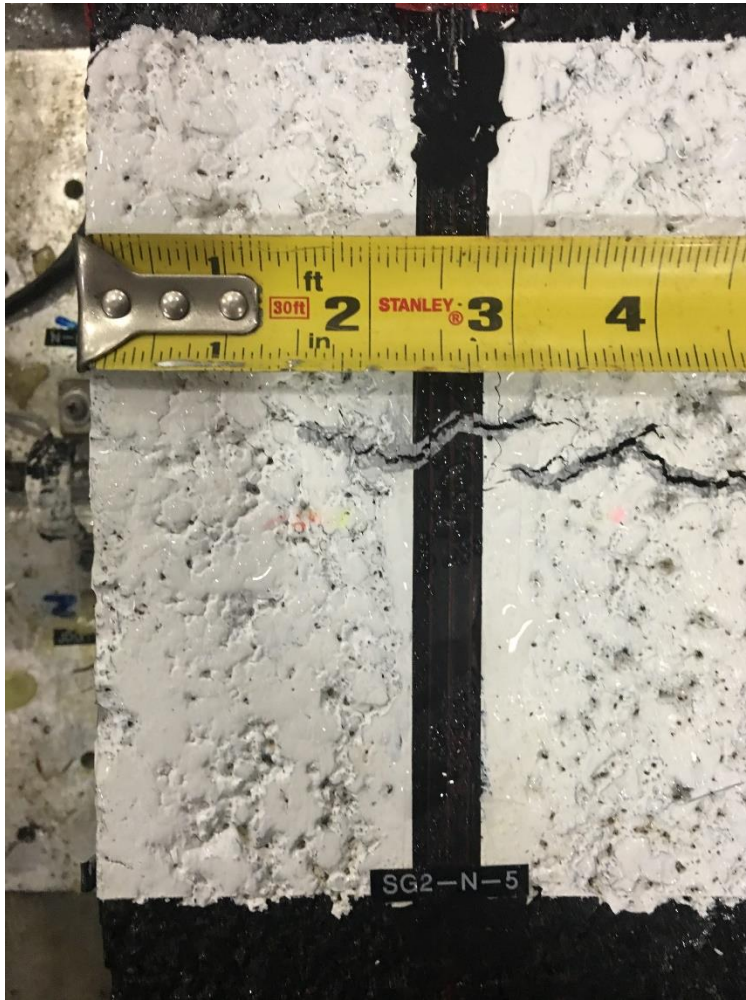


Fig 4 North section surface crack 1.5 inch from the inner vertical edge



Fig 5 Bottom-up crack at SG1-S-0 4.5 inch long



Fig 6 Bottom-up crack at SG6-S-0 3 inch long

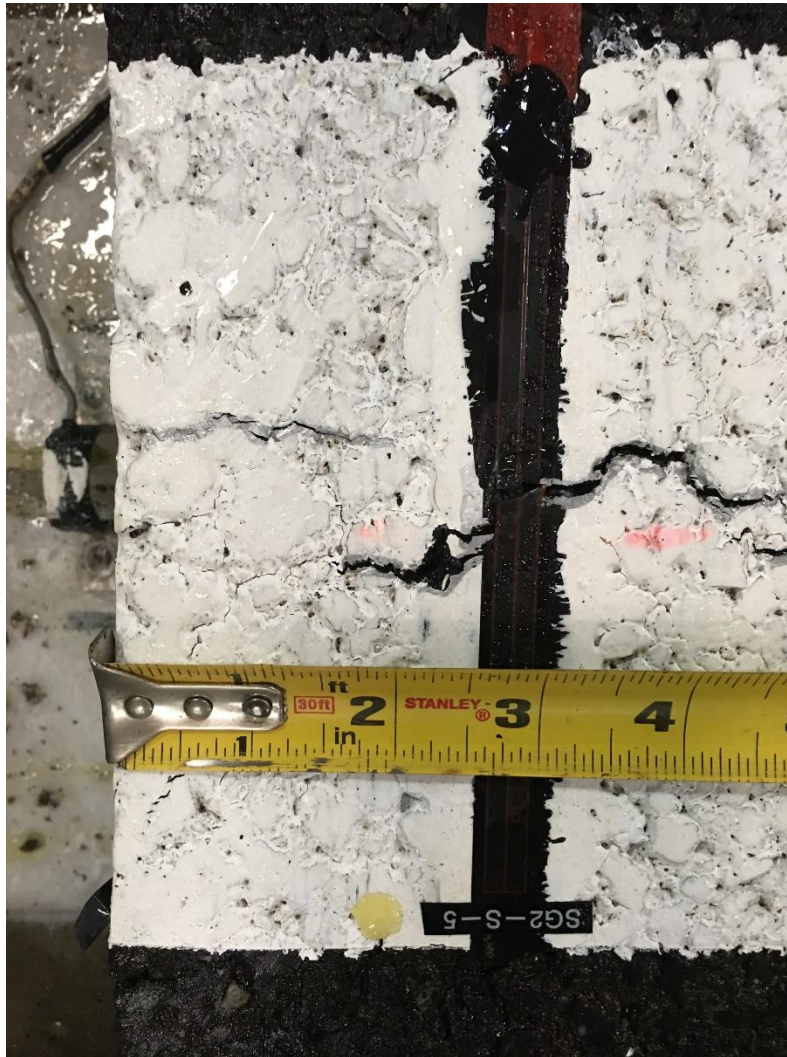


Fig 7 South section surface crack 1 inches from the inner vertical edge



Fig 8 South section surface crack 3 inches from the outer vertical edge