

## DO15 RC Indoor Phase VI Test Daily Notes

*Date: August 05, 2019*

*Time: 9:30 PM*

*Cycle count: 6389*

*Overlay Bottom Temp: T1 North: 28.75°F T1 South: 30.42°F*

*Ambient Temp: 74.66°F*

### North Section Observation

- Completed cracked, no further change.
- Bottom up crack at inner vertical edge as seen in Fig 1. Bottom up crack at outer vertical edge as seen in Fig 2.
- Surface crack connected to the bottom-up crack of the outer edge as seen in Fig 3, and the inner vertical edge shown in Fig 4.

### South Section Observation

- No change from last observation.
- Bottom up crack at inner vertical edge shown in Fig5. Bottom up crack at outer vertical edge measured approximately 3.5 inch as shown in Fig 6.
- Surface crack reached the inner vertical edge as shown in Fig 7, approximately 3 inches from the outer vertical edge, no change as seen in Fig 8.

### Issues

- None



Fig 1 Bottom-up crack at north section inner vertical edge reached top surface



Fig 2 Bottom-up crack at north section outer edge reached top surface



Fig 3 Surface crack on North Section reached outer edge



Fig 4 North section surface crack reached inner vertical edge



Fig 5 Bottom-up crack at inner vertical edge of south section reached top surface

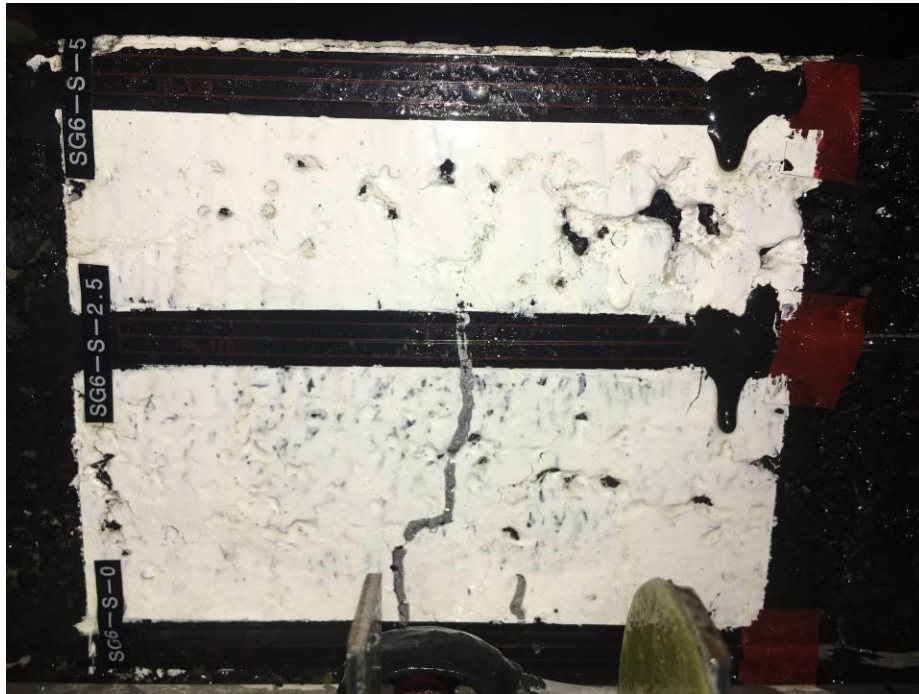


Fig 6 Bottom-up crack at SG6-S-0, SG6-S-2.5 approximately 3.5 inch long



Fig 7 South section surface crack reached the inner vertical edge



Fig 8 South section surface crack 3 inches from the outer vertical edge

The RC Indoor Phase VI test was completed today (Aug 05, 2019). At 2:00PM, one overlay core was taken at the outer edge of the south section as shown in the following Figs. At 3:00PM, the chiller, rig and the DAQ were shut off.



Figure 9 Overlay core taken at the outer edge of south section

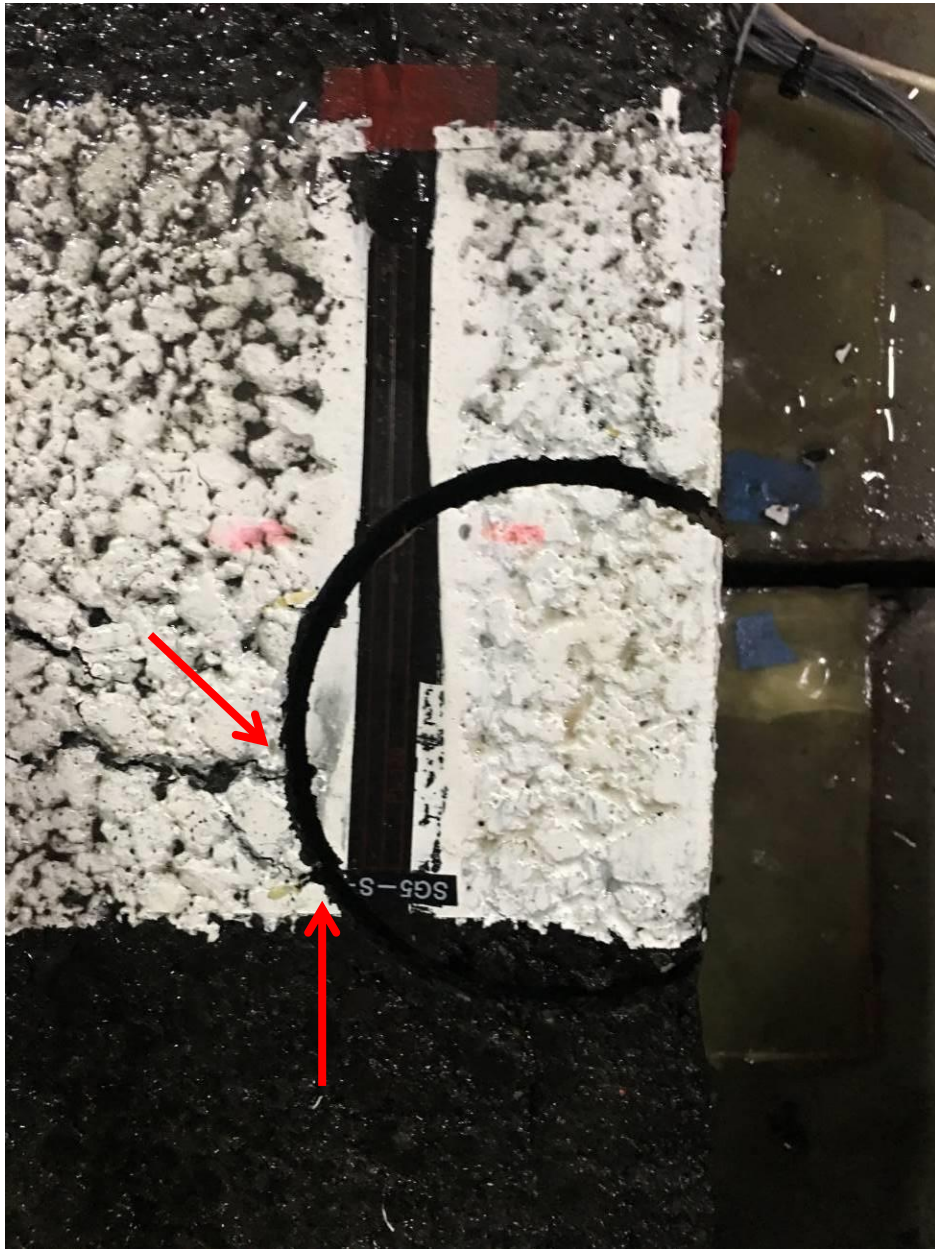


Figure 10 Overlay core taken at the end of the surface crack



Figure 11 Overlay core taken at the bottom up crack