

## DO15 RC Indoor Phase VI Test Daily Notes

*Date: July 23, 2019*

*Time: 9:00 am*

*Cycle count: 4845*

*Overlay Bottom Temp: T1 North: 29.1°F    T1 South: 30.9°F*

*Ambient Temp: 73.62°F*

### North Section Observation

- Completed cracked, no further change.
- Bottom up crack at inner vertical edge (Fig 1). Bottom up crack at outer vertical edge (Fig 2).
- Surface crack connected to the bottom-up crack of the outer edge (Fig 3), and the inner vertical edge (Fig 4).

### South Section Observation

- No change from last observation.
- Bottom up crack at inner vertical edge (Fig5). Bottom up crack at outer vertical edge propagate approximately 0.5 inch resulting SG6-S-2.5 read open (Fig 6).
- Surface crack reached the inner vertical edge (Fig 7), approximately 3.5 inches from the outer vertical edge, no change (Fig 8)

### Issues

- None



Fig 1 Bottom-up crack at north section inner vertical edge reached top surface



Fig 2 Bottom-up crack at north section outer edge reached top surface

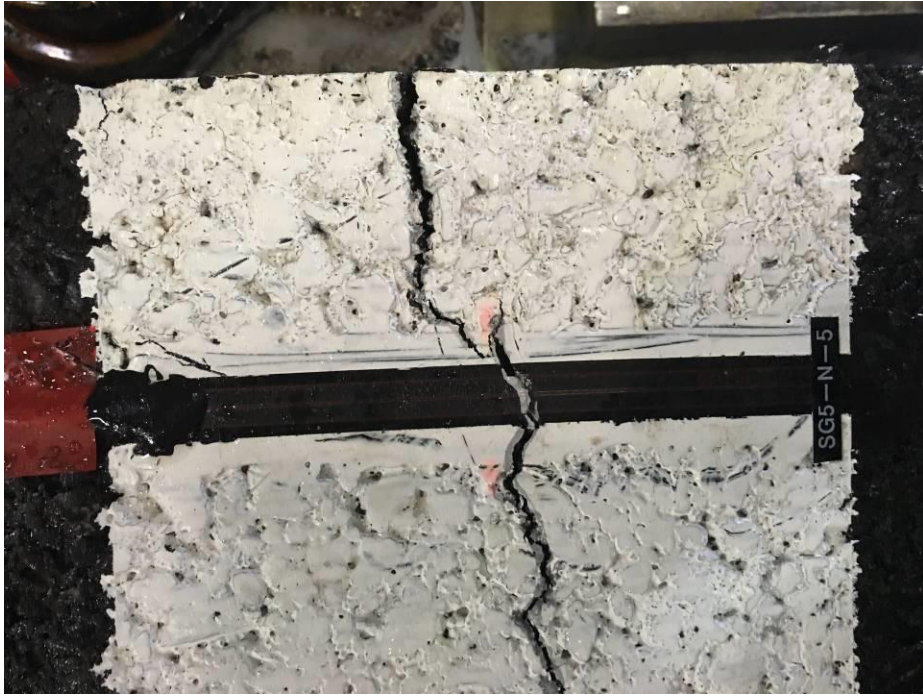


Fig 3 Surface crack on North Section reached outer edge



Fig 4 North section surface crack reached inner vertical edge



Fig 5 Bottom-up crack at inner vertical edge of south section reached top surface

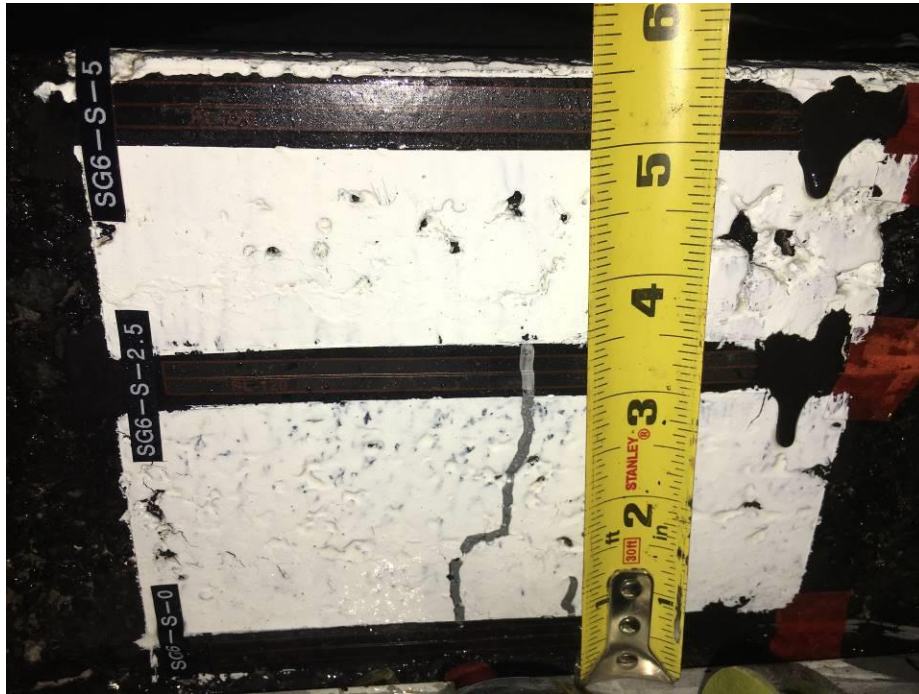


Fig 6 Bottom-up crack at SG6-S-0, SG6-S-2.5 approximately 3.5 inch long

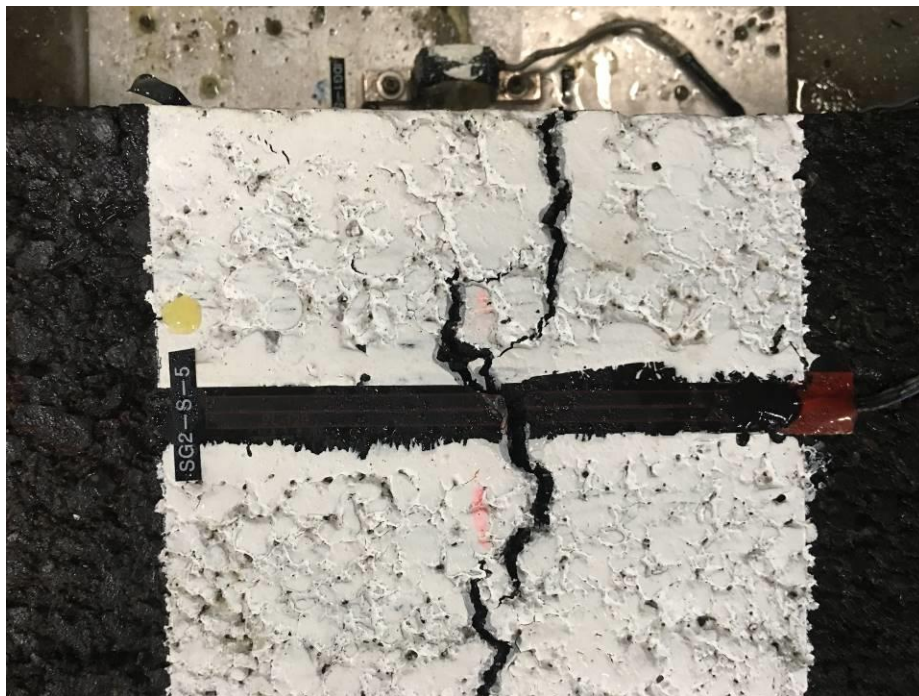


Fig 7 South section surface crack reached the inner vertical edge

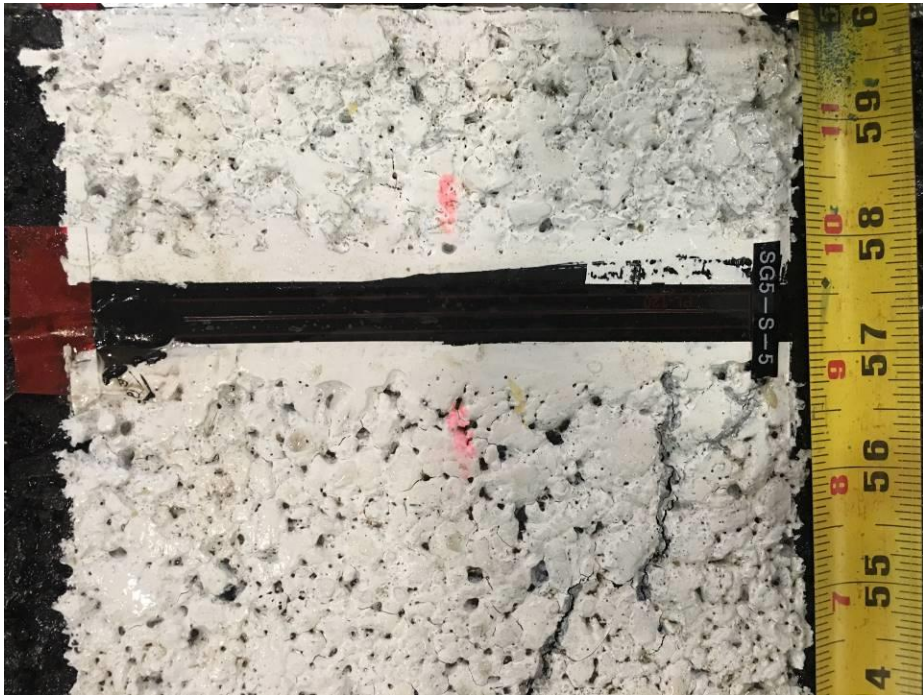


Fig 8 South section surface crack 3 inches from the outer vertical edge

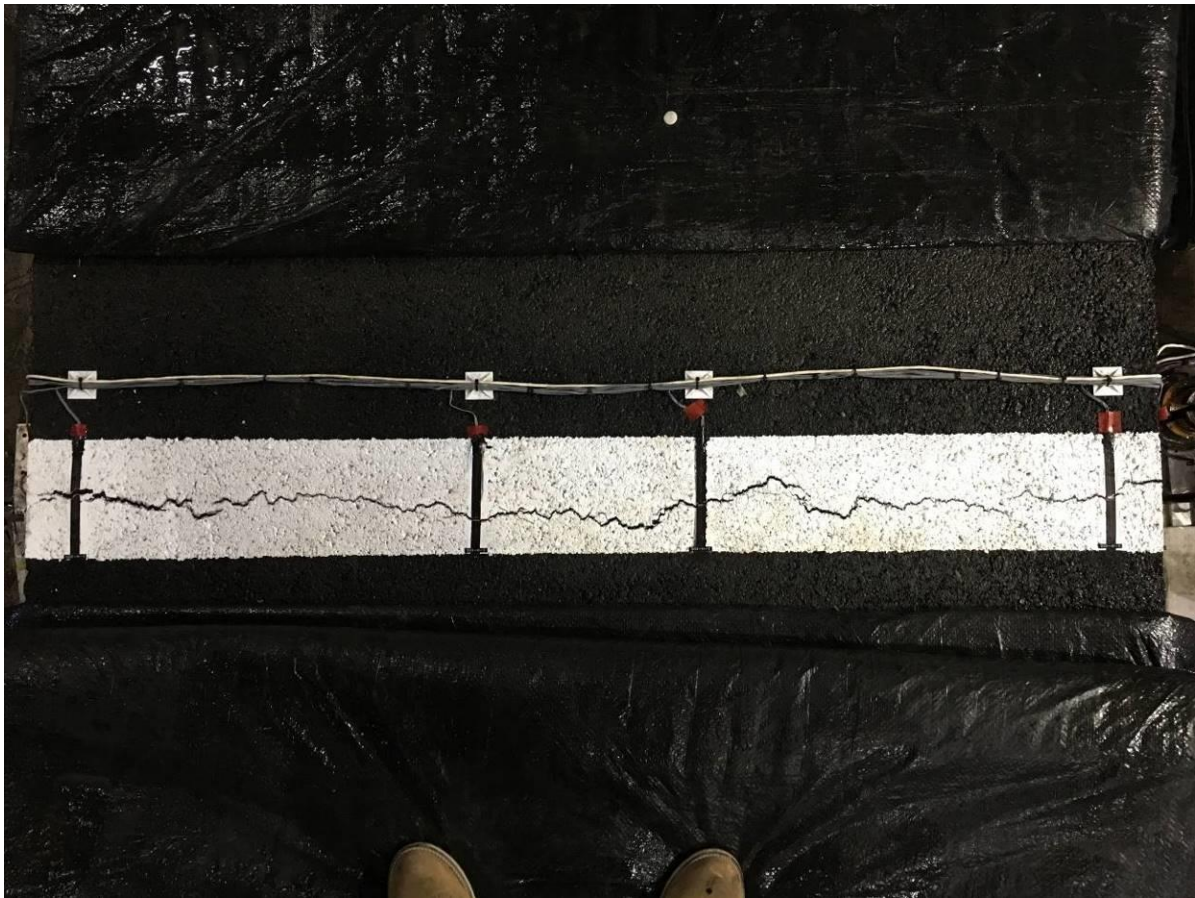


Fig 9 Surface crack on the north section

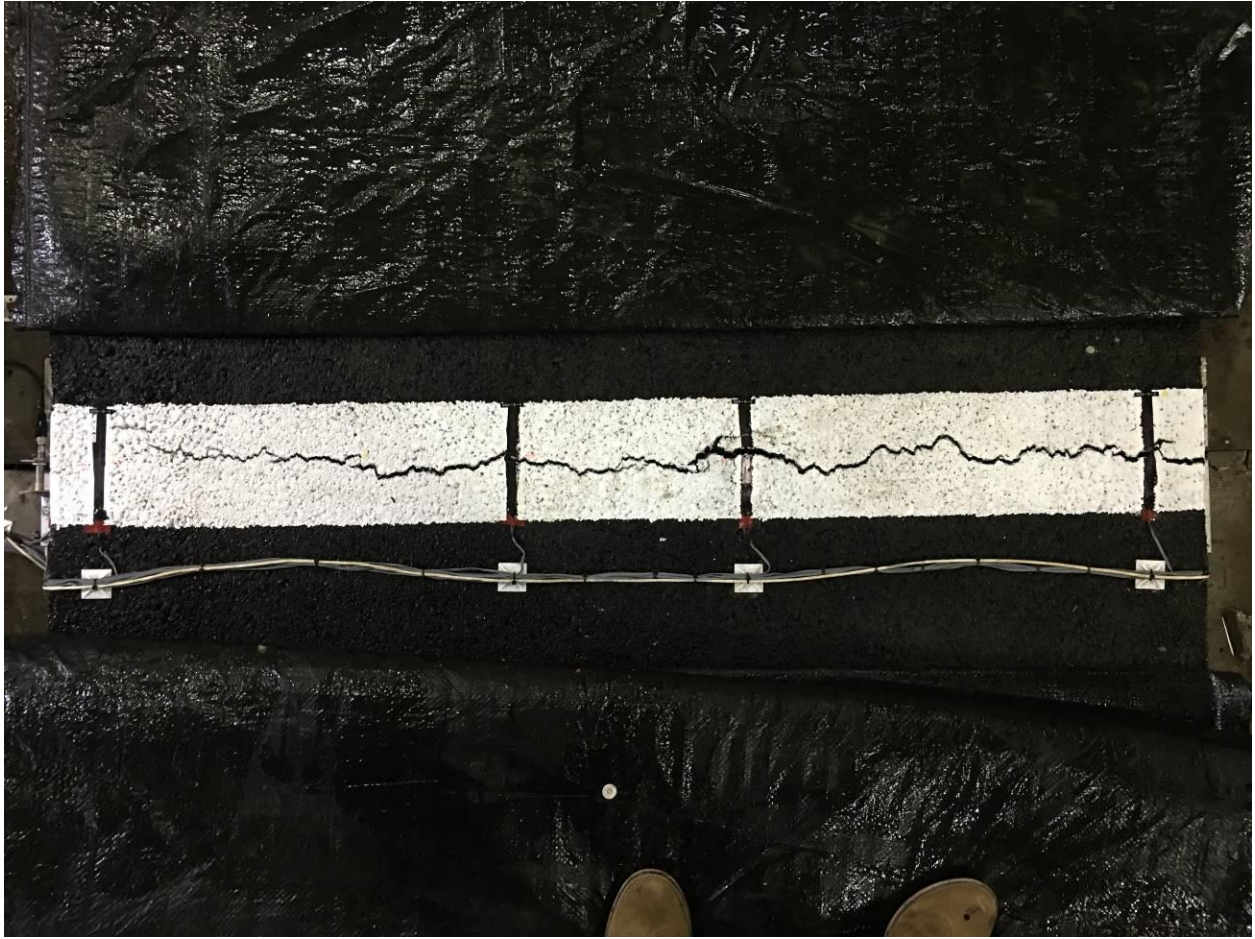


Fig 10 Surface crack on the south section