

DO15 RC Indoor Phase VI Test Daily Notes

Date: June 10, 2019

Time: 09:20am

Cycle count: 317

Overlay Bottom Temp: T1 North: 26.77 F T1 South: 27.54 F

Ambient Temp: 70.89 F

North Section Observation

- 1 crack through SG1-N-0, approximately 1.125 inches (Fig 1)
- 1 crack through SG6-N-0, approximately 1.125 inches (Fig 2)

South Section Observation

- No signs of crack

Issues

- No

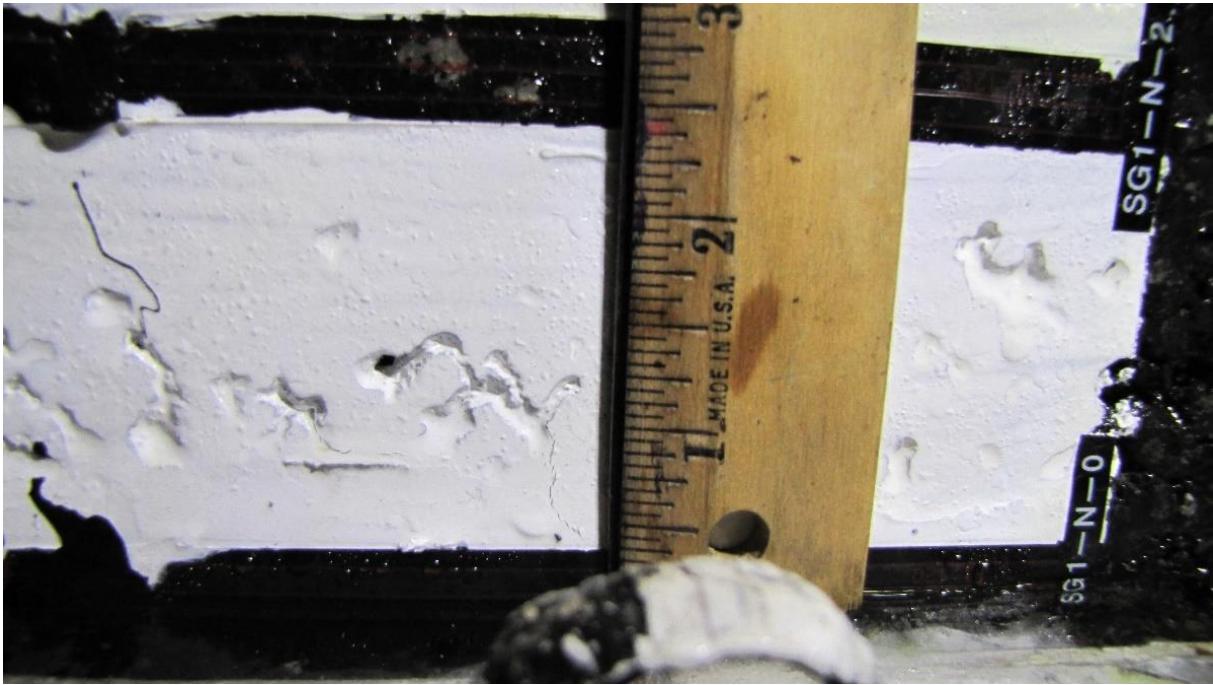


Fig 1 Bottom-up crack at SG1-N-0

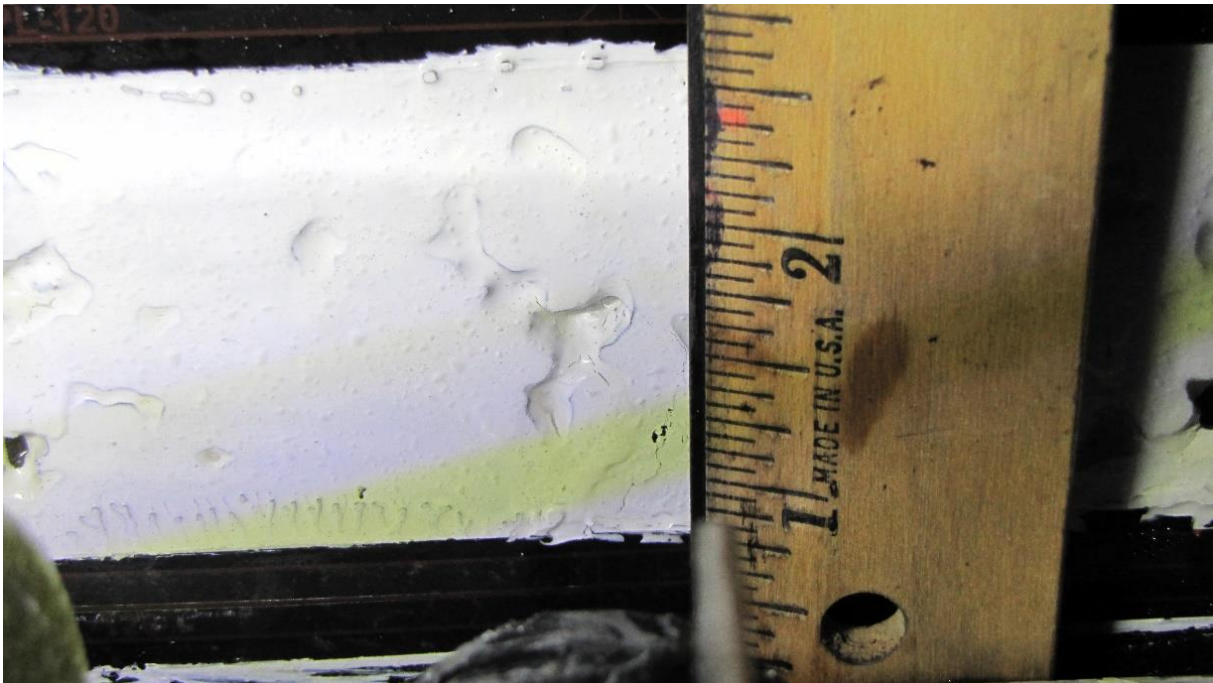


Fig 2 Bottom-up crack at SG6-N-0